

## TECHNICAL DATA SHEET

# TOPIRTEC

### APPLICATION:

**TOPIRTEC** is a styrol-acrylic resin based product in water emulsion resistant to abrasion and the aggressive action of fuels and kerosene designed to protect bituminous compound flooring.

**TOPIRTEC** is ideal for airports, service areas and for cycling tracks.

**TOPIRTEC** is highly resistant to fuels, lubricants, oil and kerosene, it is available in different colors (according to client request), it protects asphalt surfaces from high/low temperatures, it extends the life of the asphalt flooring, it is resistant to abrasion and UV rays, it is highly stable color, it is easy and cold applied.

### CHEMICAL FAMILY:

**TOPIRTEC** is a styrol-acrylic resin based product in water emulsion.

### PHYSICAL AND CHEMICAL PROPERTIES:

### DOSAGE:

Dosage varies from 1 to 2.5 Kg. per sq.m. (in 2 or 3 courses) depending on the application way and the absorption capacity of the laying surface. Application must be made using a rubber squeegee or spray gun. Product may be diluted with water (the quantity of water to use depends on the application method). Clean tools under running water while product is fresh.

	It must be applied with	
Ambient temperature	MIN 10°C	MAX
40°C		
Ambient relative humidity		MAX 90%
Temperature of the laying surface	MIN 5°C	MAX
50°C		

Bulk density (Kg/dm3)	1,57 + 0,1
Dry mass residue (%)	73 + 1
Dry volume residue (dm3/Kg)	0,37 + 0,02
Residue at 450°C (%)	55 + 2
pH	8 + 0,1
Resistance to abrasion (loss in weight with Mole H18 - 1000 gr. - 1000 revolutions, gr)	2,4

### STORAGE:

Storage temperature	MIN 3°C MAX 40°C
Pot life	12 MONTHS

### PACKAGE:

**TOPIRTEC** is delivered in 45 Kg drums.

### SAFETY:

Not dangerous (According to EEC Directives). For further information see the Safety Sheet

The information contained herein is indicative only and without express guarantee. As no control can be exercised over its use, we cannot be held responsible for any damage which may result from its misuse.

## REFERENCES

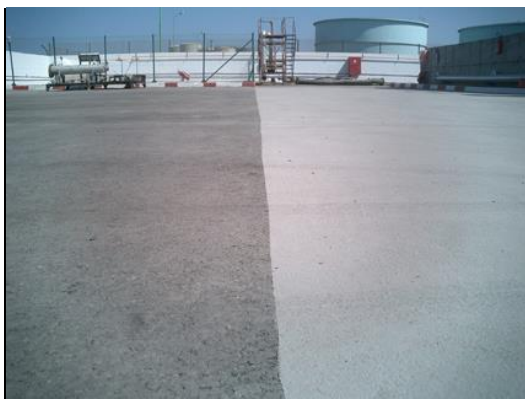
▪ Morocco	Casablanca Int.l Airport	year: 2005	square meter: 20.000
▪ Morocco	Skirat Oil Depot	year: 2005	square meter: 20.000
▪ Spain	Fuerteventura Int.l Airport	year 2006	square meter: 80.000
▪ Spain	Valencia Int.l Airport	year: 2006	square meter: 2.000
▪ Spain	Bilbao Int.l Airport	year: 2006	square meter: 1.000
▪ Spain	Madrid Barajas Int.l Airport	year: 2006	square meter: 1.000
▪ Spain	Palma de Mallorca Int.l Airport	year 2008	square meter: 1.000
▪ Spain	La Palma Int.l Airport	year 2008	square meter: 8.000
▪ Morocco	Essaouira Int.l Airport	year 2009	square metre: 40.000
▪ Spain	Leon Int.l Airport	year 2009	square metre: 36.000
▪ Spain	Barajas Madrid Int.l Airport	year 2010	square metre: 5.000
▪ Spain	Gran Canaria Int.l Airport	year: 2010	square meter: 7.000
▪ Spain	Leon Int.l Airport	year 2010	square meter: 12.000
▪ Spain	Cordoba Int.l Airport	year: 2010	square meter: 17.000
▪ Spain	Rabat Int.l Airport	year: 2011	square meter: 20.000
▪ Spain	Malaga Int.l Airport	year: 2011	square meter: 18.500
▪ Spain	Las Palmas de Gran Canaria Airport	year: 2012	square meter: 15.000
▪ Spain	Leon Airport	year 2012	square meter: 5000
▪ Spain	Sabadell Airport	year 2012	square meter: 10.000
▪ Spain	Las Palmas Int. Airport	year 2012	square meter: 20.000
▪ Spain	Tenerife Airport	year: 2013	square meter: 2.000
▪ Colombia	Cartagena de Indias Airport	year 2014	square meter: 50.000
▪ Spain	Albacete Military Airport (NATO)	year: 2015	square meter: 12.000
▪ Spain	Gran Canaria Int.l Airport	year: 2017	square meter: 11.000
▪ Morocco	Private airport	year:2017	square meter: 100.000

The information contained herein is indicative only and without express guarantee. As no control can be exercised over its use, we cannot be held responsible for any damage which may result from its misuse.

**PICTURES OF SOME APPLICATIONS**



*Bitumen and Fuel storage area*



*Bitumen and Fuel storage area*



*Detail of the finished surface*

The information contained herein is indicative only and without express guarantee. As no control can be exercised over its use, we cannot be held responsible for any damage which may result from its misuse.

**PICTURES OF APPLICATION METHOD**



*Agitation before application*



*Application in extensive surfaces*



*Application with squeegee*



*Application with special equipment*

The information contained herein is indicative only and without express guarantee. As no control can be exercised over its use, we cannot be held responsible for any damage which may result from its misuse.